



1164 Executive Tower

1164 E Oakland Park Blvd, Fort Lauderdale, FL 33334



Michael Camardello

RE/MAX Experience
1103 NE 26th St, Wilton Manors, FL 33305
mikecamardello@me.com
(954) 649-6605



1164 Executive Tower

\$22.50 /SF/Yr

Great office space with many medical, legal, architect, administrative, accounting, real estate, title, and a variety of corporate office and administrative applications. Zoned B-1. Five exam rooms that can easily be used as offices. Two large open areas for a conference room, exercise/rehabilitation or add more offices....

- Located in centralized area of Oakland Park grants convenient access for office employees, clients and/or patients.
- Flexible space with offices, conference room, waiting room, reception area and open space for more offices or exercise/rehabilitation.
- Newly renovated building & great space for professional in health, legal, accounting, real estate, title, medical fields & a variety of corporate apps
- Located on East Oakland Park Blvd. between I-95 and Federal Highway. Close to downtown, Las Olas and the Port on SE 17th St.
- Approximately 10 minutes from the Fort Lauderdale International Airport, downtown, Wilton Manors, Oakland Park & Fort Lauderdale



Rental Rate:	\$22.50 /SF/Yr
Property Type:	Office
Property Sub-type:	Medical
Building Class:	C
Rentable Building Area:	13,500 SF
Year Built:	1975
Walk Score ®:	82 (Very Walkable)
Transit Score ®:	39 (Some Transit)
Operating Expenses:	\$33.33 USD/SF/Mo
Rental Rate Mo:	\$1.88 USD/SF/Mo

1st Floor

Space Available	2,205 SF
Rental Rate	\$22.50 /SF/Yr
Date Available	Now
Service Type	Plus All Utilities
Built Out As	Professional Services
Space Type	New
Space Use	Office
Lease Term	Negotiable

Newly renovated building and great space for professional in health, legal, accounting, medical fields. Signage.

Major Tenant Information

Tenant	SF Occupied	Lease Expired
Ahf	2,250	
Aids Healthcare Foundation	1,500	
Executive 1164 Towers	-	
Fusion Health & Wellness LLC	-	
V-Fusion	1,474	



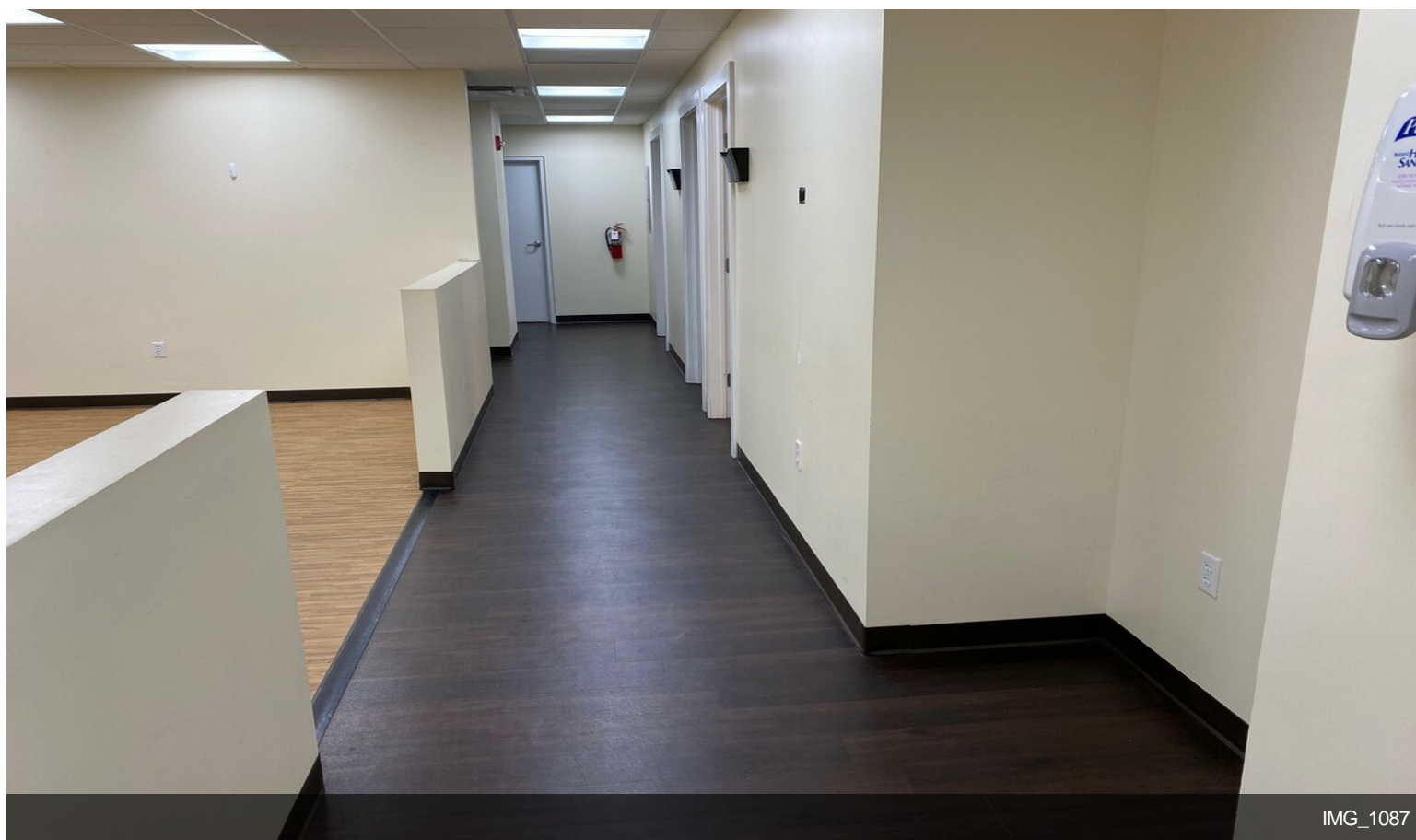
1164 E Oakland Park Blvd, Fort Lauderdale, FL 33334

Great office space with many medical, legal, architect, administrative, accounting, real estate, title, and a variety of corporate office and administrative applications. Zoned B-1. Five exam rooms that can easily be used as offices. Two large open areas for a conference room, exercise/rehabilitation or add more offices. One additional corner office, reception office area, one ADA compliant bathroom, one kitchenette and a waiting room for patients, clients or visitors. Renovated upscale building with impact glass windows and doors. Parking and signage available.

Property Photos

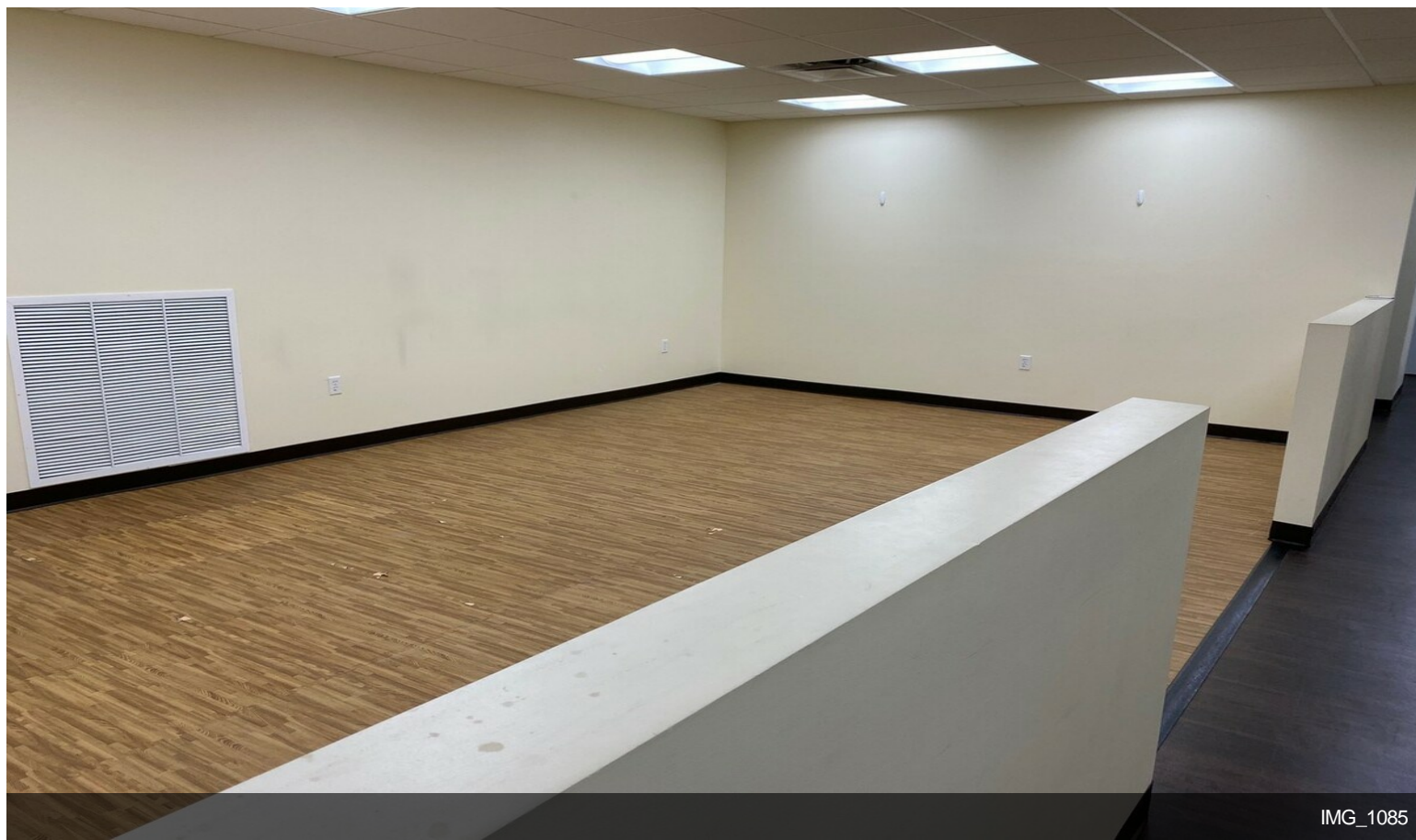


Fitness Area



IMG_1087

Property Photos

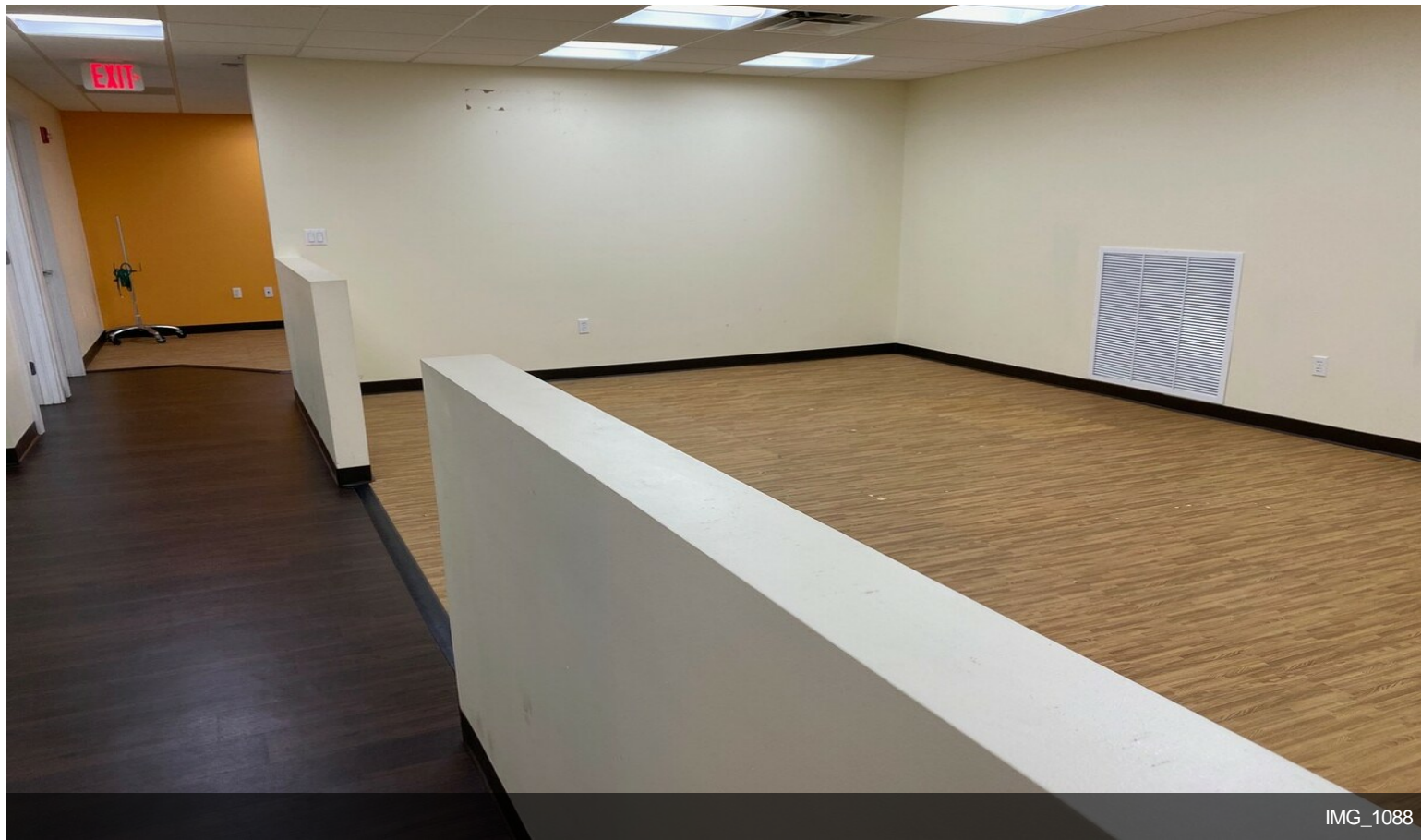


IMG_1085

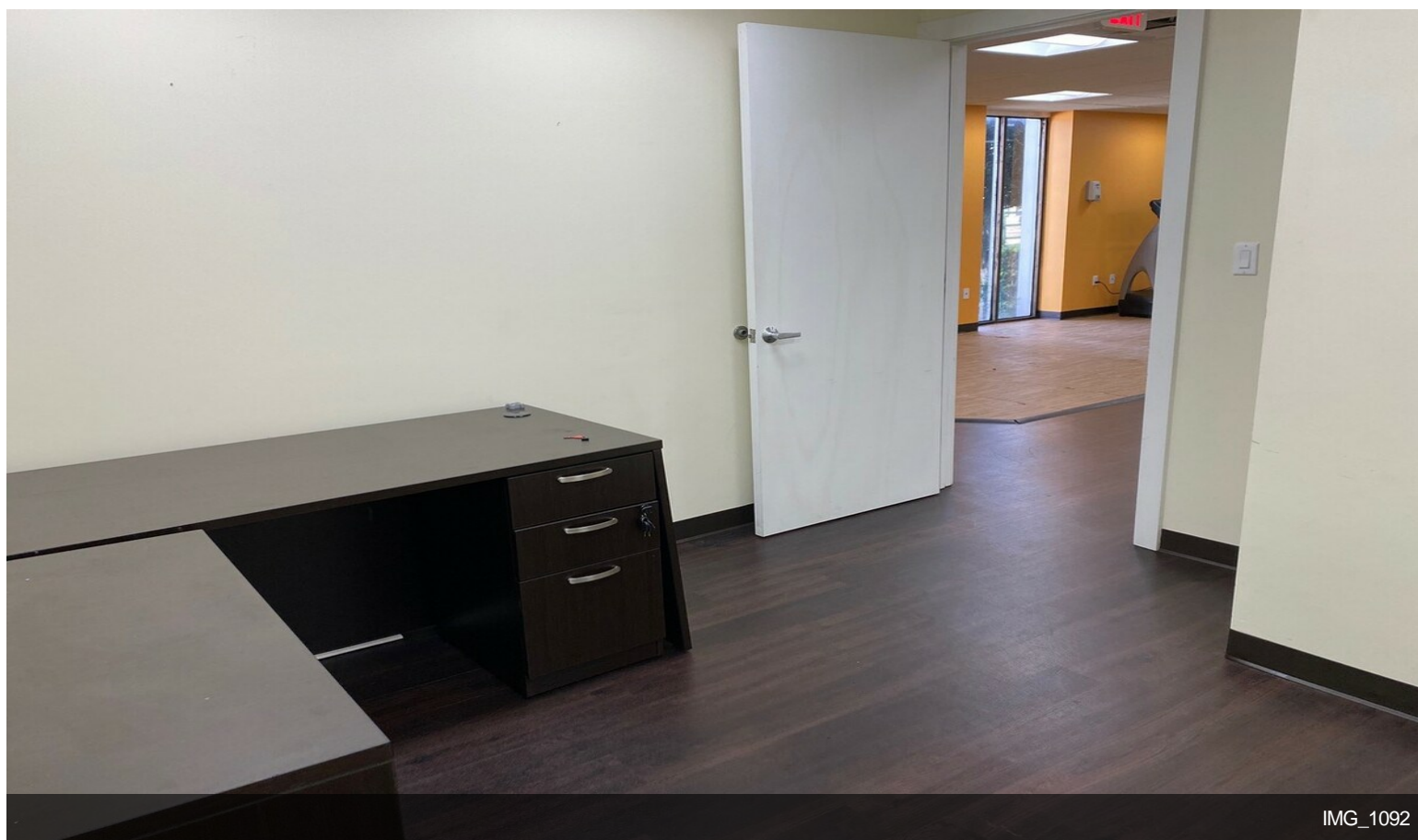


IMG_1082

Property Photos

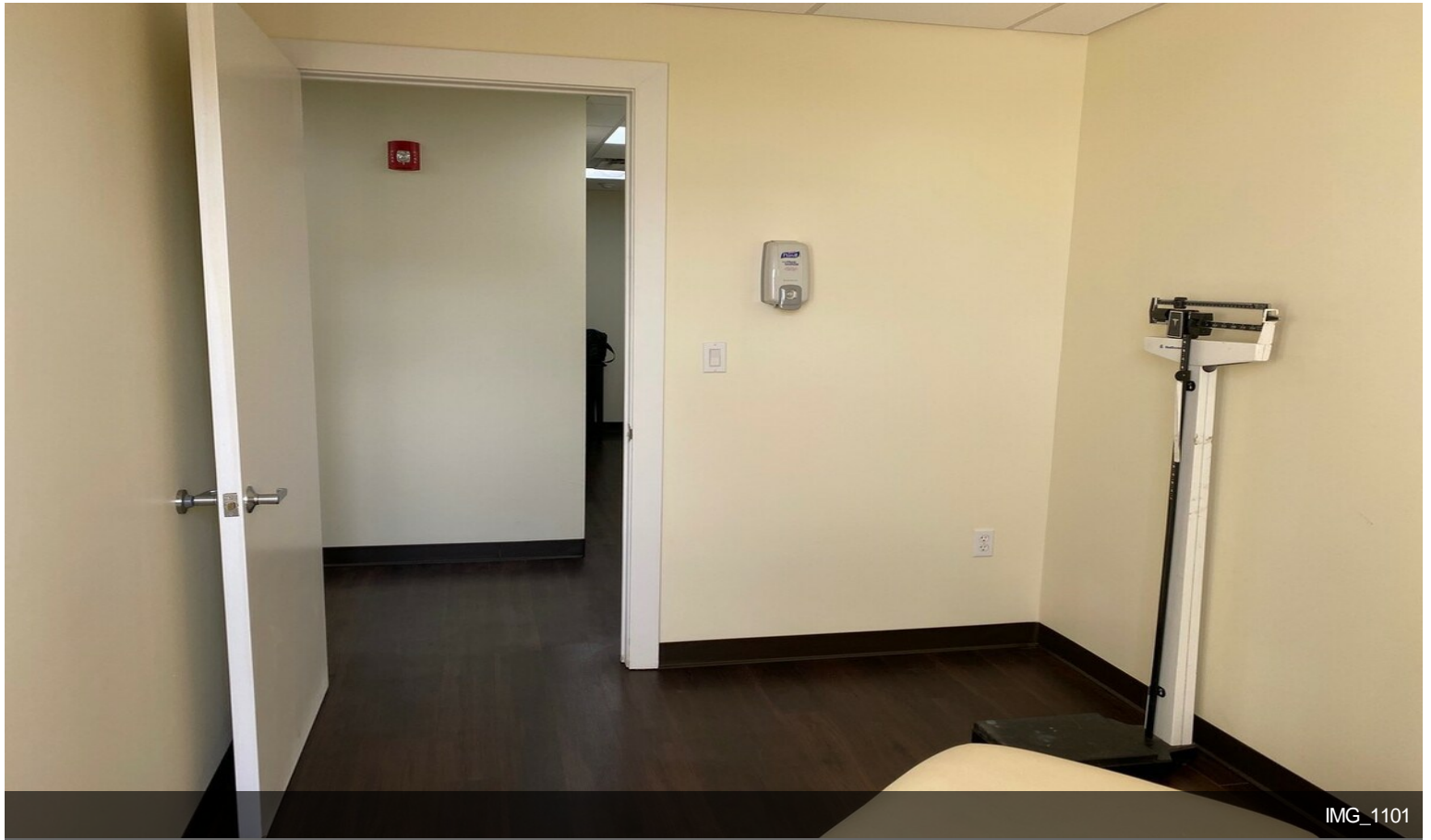


IMG_1088

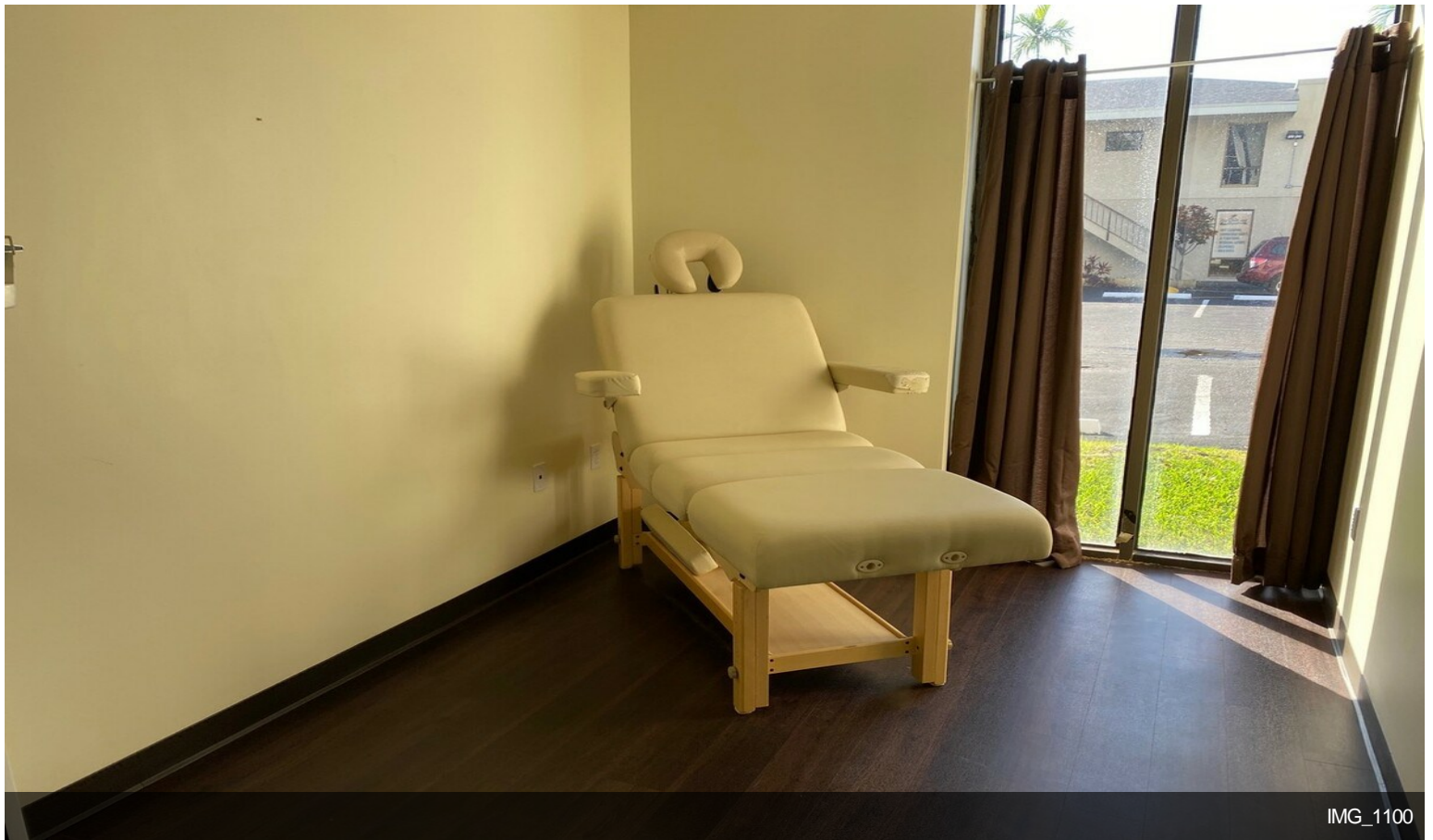


IMG_1092

Property Photos

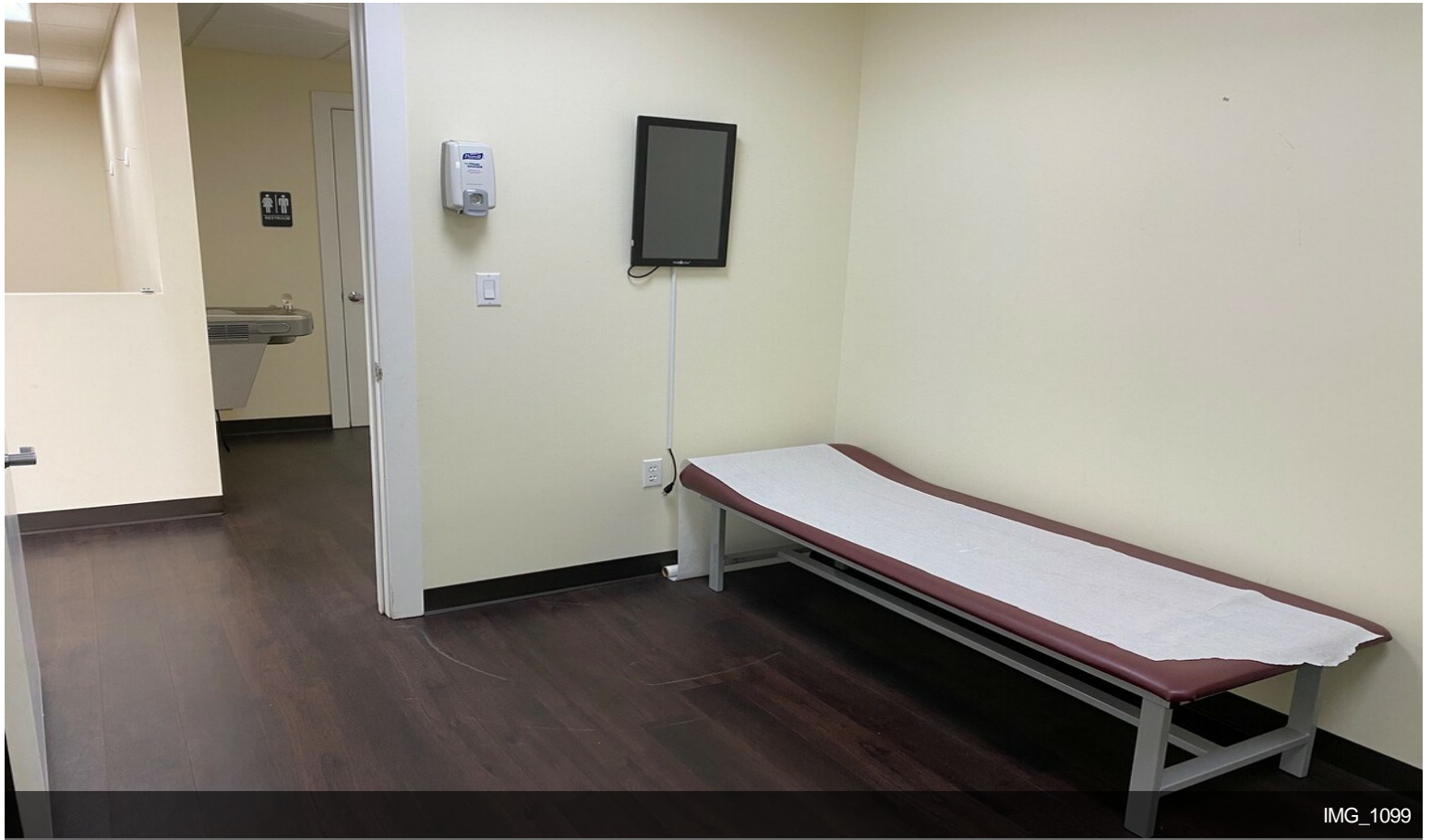


IMG_1101



IMG_1100

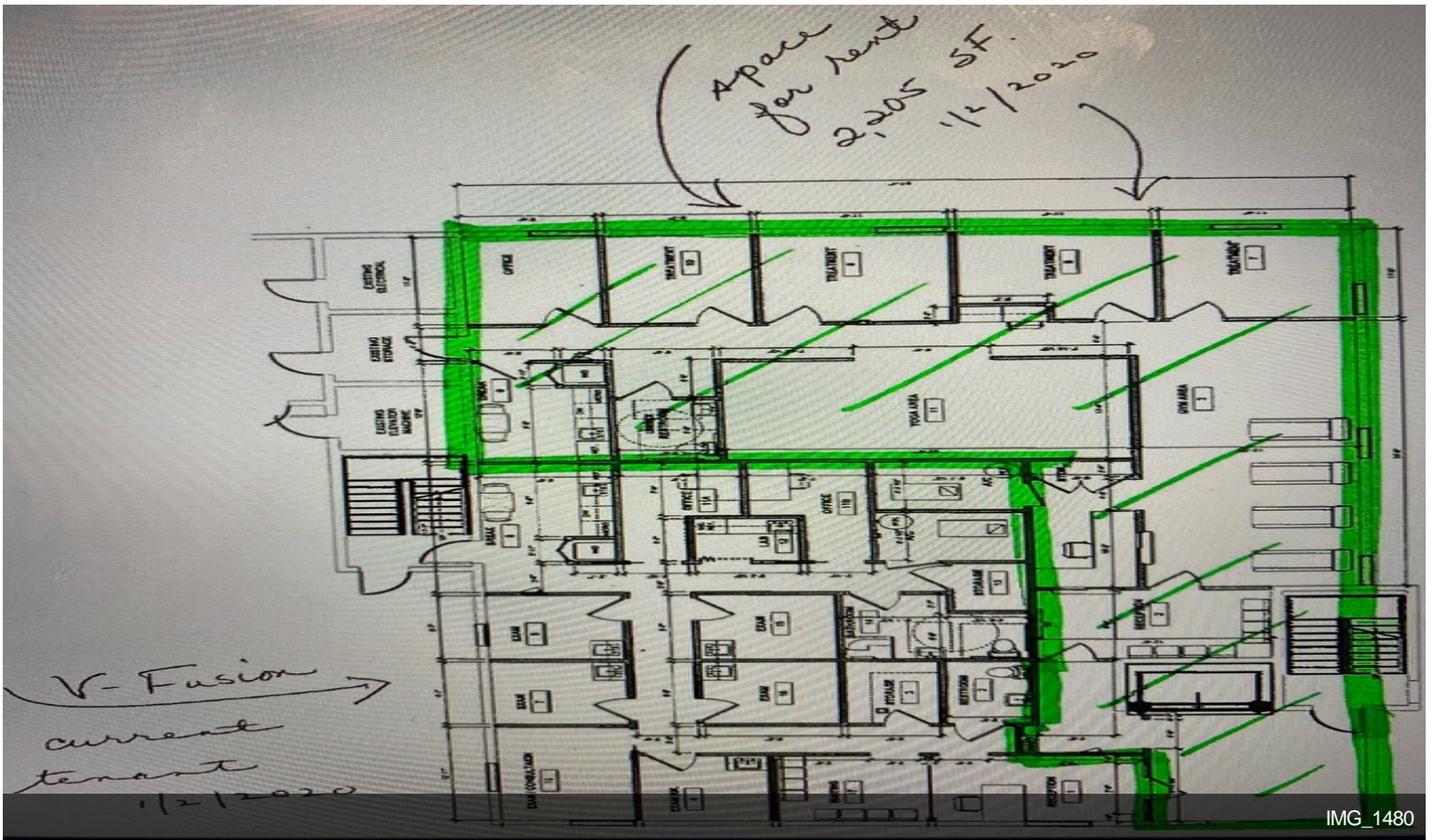
Property Photos



Property Photos



IMG_1102



IMG_1480